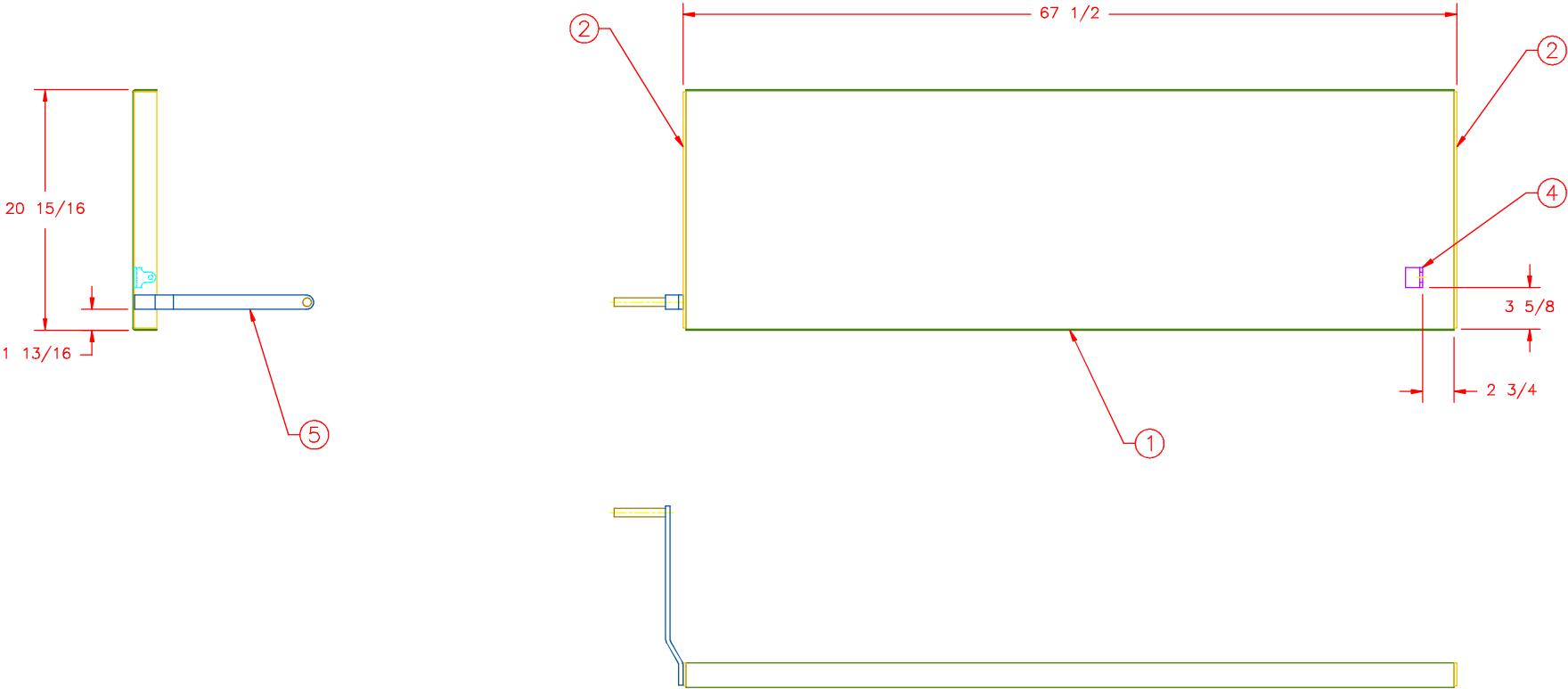


This drawing contains confidential proprietary information of Triple C, Inc. and is subject to return upon request. The furnishing of this drawing is not to be construed as the grant of any license, express or implied, to manufacture, have manufactured, use or sell the structures shown hereon.



ITEM	MATERIAL \ DESCRIPTION	LENGTH	QTY	DRAWING NO.
1	HF12-18 LID BREAK		1	30-2204
2	FI 1/4x2	20-5/8	2	
3	(REMOVED)		-	
4	HF12-51 SHK MNT		1	30-2207
5	HF12-17 HANDLE		1	30-1217

TRIPLE C

INC.

P.O. BOX 248, SABETHA, KS 66534

(785) 284-3674 FAX (785) 284-3931

TOLERANCES:

Unless otherwise specified

XX .010

XXX .005

XXXX .0005

X/X 1/32

ANGLE 0°30'

SHEET

OF

1:10

SCALE:

1:10

DRAWN BY:

CHRIS ABERLE

10/4/05

TITLE:

LID, HF1200,

WELDMENT

ASSEMBLY NUMBER:

HF12-56

DRAWING NUMBER:

30-1207

REV